

# **MOVING PEOPLE**



**PASSENGER  
TRANSPORT**

**TYRES FOR  
EVERY JOURNEY**

**GOODYEAR**

# GOODYEAR: THE DESTINATION FOR EVERY KIND OF BUS FLEET

## A NEW TYRE OPTION FOR BUS AND COACH FLEETS

Whether it is inner-city bus routes or a day trip across the country, there are many reasons for transporting people. But all passengers want the journey to be comfortable, safe and on time - which means fleets need the right tyres on their vehicles.

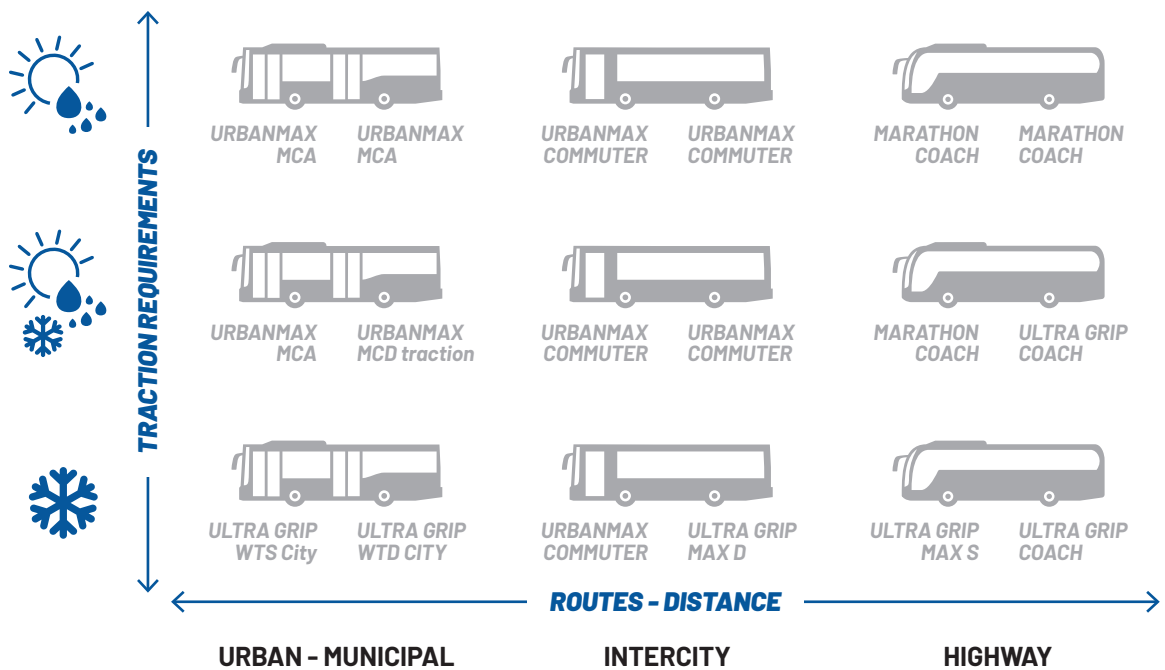
This is why Goodyear has designed a complete range of tyres:

- **GOODYEAR URBANMAX MCA/MCD** for urban traffic
- **GOODYEAR URBANMAX COMMUTER** for intercity traffic
- **GOODYEAR MARATHON COACH/ULTRA GRIP COACH** for long-distance travel



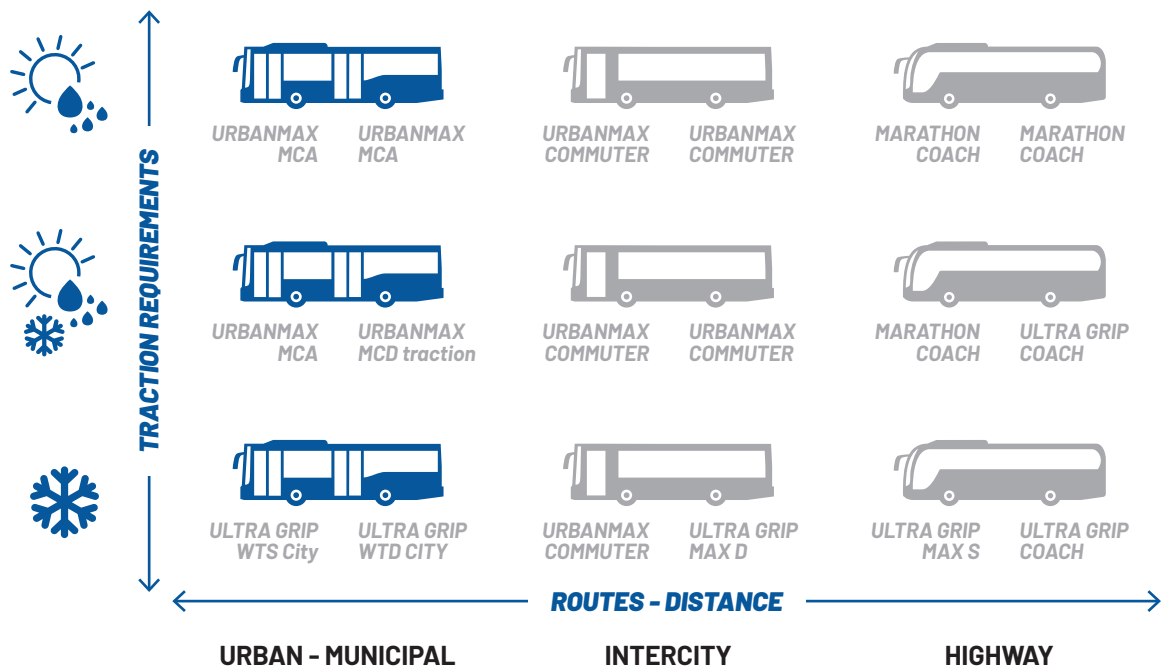
# TYRE OPTIONS DESIGNED TO SUIT EVERY JOURNEY

Goodyear has a wide range of bus and coach tyres that are designed to give you the performance you need. Whatever kind of fleet you operate, **whatever the application, we can provide the right balance of efficiency, durability, sustainability and comfort** – so you can provide the right experience to your passengers.



# FUTURE-READY BUS TYRES FOR THE CITY

Whether you use electric or conventional buses, the **URBANMAX MCA/MCD** range gives your city fleet everything it needs. Robust enough to withstand the rigours of start-stop urban driving, they are 3PMSF-labelled, provide excellent mileage and are fully regroovable and retreadable.



## URBANMAX MCA/MCD IS THE RIGHT CHOICE FOR BUS FLEETS THAT:



OPERATE MAINLY IN URBAN ENVIRONMENTS



WANT MAXIMUM PROTECTION AGAINST KERB DAMAGE



NEED GOOD FUEL EFFICIENCY/ BATTERY RANGE



ARE STARTING TO INCORPORATE ELECTRIC VEHICLES

# URBANMAX MCA & URBANMAX MCA HL+

**THE EVERYDAY TYRE  
FOR EVERYDAY WEATHER**

The URBANMAX MCA tyre can be used on the steering axle or as an all-round fitment.

The URBANMAX MCA HL+ tyre is an 'electric drive ready' version, providing high load capacity to support heavy battery packs on electric buses, and greater economy for extended battery life.



**STEER &  
ALLROUND**

## **WIDE TREAD WITH FIVE RIB DESIGN**

providing high mileage potential, good handling and low noise emissions.



## **FLEXOMATIC SIPES AND EDGE BLADING**

ensure effective braking and performance in wintry conditions. All tyres are 3PMSF-labelled.



## **REINFORCED SIDEWALL WITH WEAR INDICATORS**

guard against abrasion and scuffing caused by kerbside contact. Wear indicators show when tyre should be reversed.



## **LOW RR TREAD COMPOUND\***

improves fuel efficiency (label grade C) and battery life and also further enhances traction in the wet.



## **INTERLACED STRIP TECHNOLOGY\***

For higher loads and lower energy consumption.



## **RFID CHIP IN TYRE\***

Supports state-of-the-art tyre flow management.



*\* For Urbanmax MCA HL+ only*



# URBANMAX MCD TRACTION

**FOR RELIABLE TRACTION IN EXTREME CONDITIONS**

The URBANMAX MCD / MCD traction tyre is designed for the drive axle of city buses in challenging weather conditions.



## **REINFORCED SIDEWALL WITH WEAR INDICATORS**

guard against abrasion and scuffing caused by kerbside contact. Wear indicators show when tyre should be reversed.



## **WIDE TREAD DESIGN WITH HIGH TRACTION COMPOUND AND OPTIMISED PITCHING**

Providing high mileage, excellent wet handling and low noise emissions.



## **HIGH SIPE DENSITY WITH FLEXOMATIC SIPES AND 3D WAFFLE BLADES**

for outstanding winter and wet performances, high mileage and improved rolling resistance.



## **OPTIMIZED FOOTPRINT/PRESSURE DISTRIBUTION**

Ensuring even wear and enhanced tread damage resistance.



# ULTRA GRIP WTS/WTD CITY

## A PAIR OF TRUE WINTER TYRES FOR BUSES

The ULTRA GRIP WTS City is a dedicated steer axle winter tyre, also suitable for all-position use, with improved traction and braking performances on snow and ice over standard all-season tyres.



**STEER &  
ALLROUND**



**DRIVE**

The ULTRA GRIP WTD City tyre features excellent performance in winter conditions, keeping fleet efficiency at maximum level by providing good mileage, excellent snow handling and braking.

### REINFORCED SIDEWALLS WITH WEAR INDICATORS

Protection against curb contact and trouble free life-long protection for high mileage and long service life.



### WIDE TREAD DESIGN WITH DEEP TREAD

Excellent mileage, road handling and lateral stability.



### HIGH DENSITY OF 'Z'-SHAPE SIPES

Excellent traction and braking on wet and snow.



### OPTIMISED GROOVE WIDTH AND SHAPE

Effectively draining snow and slush; stone repellent to avoid stone trapping.



### 3D WAFFLE BLADE TECHNOLOGY \*

Excellent traction and braking on wet, snow and icy roads with improved stability, damage and wear resistance.



### OPEN SHOULDERS \*

For extra snow and mud traction, wet skid resistance and good self cleaning.

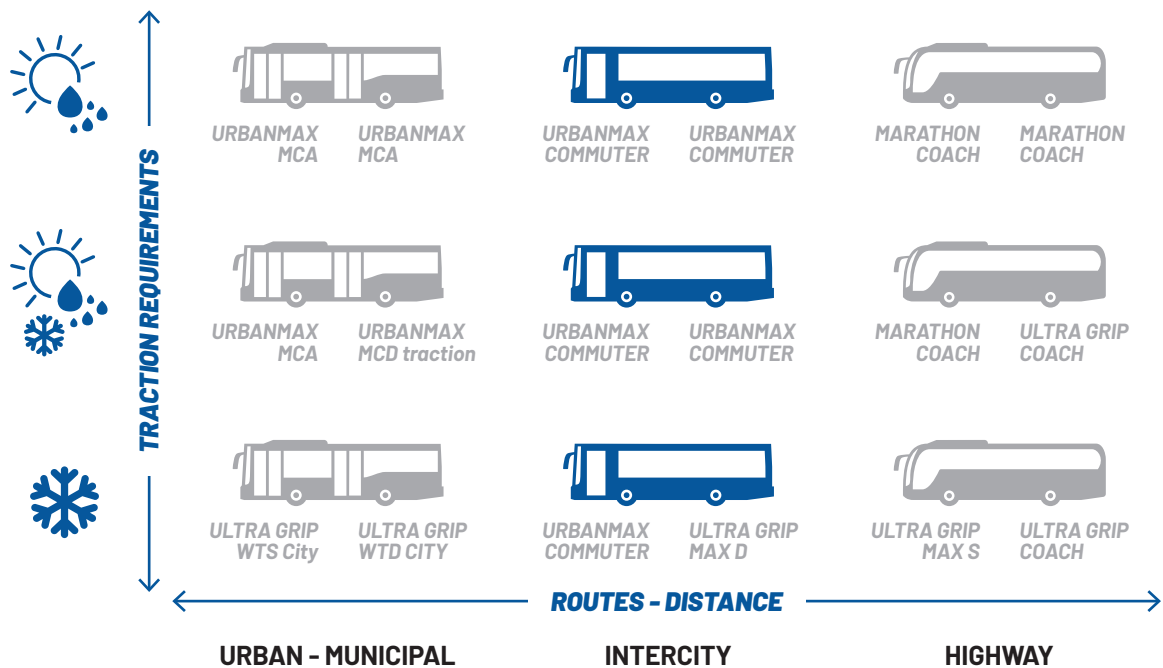


\* ULTRA GRIP WTD City



# HYBRID TYRES FOR INTERCITY PASSENGER TRANSPORT

It's all change for commuters - and that means it's all changing for bus fleets too. As environmental regulations have made urban driving less attractive to individual motorists, commuters are increasingly turning to bus services to get into town. Which demands tyres that are tough enough for the city, but with low rolling resistance for faster, arterial roads. The **URBANMAX COMMUTER** is that new kind of tyre for a new world of mobility.



## URBANMAX COMMUTER TYRES ARE THE RIGHT CHOICE FOR BUS FLEETS THAT:



OPERATE BOTH ON URBAN AND ARTERIAL ROADS



ARE STARTING TO INCORPORATE ELECTRIC VEHICLES



SEEK BETTER FUEL EFFICIENCY / BATTERY RANGE



WANT HIGH MILEAGE WITH PROTECTION AGAINST TYRE DAMAGE





# URBANMAX COMMUTER

**BREAK THE ROUTINE IN MOBILITY**

A series of design innovations provide efficiency for extra range while also delivering robustness for excellent mileage in tough city driving conditions.

**STEER &  
ALLROUND**



## **REINFORCED SIDEWALLS WITH WEAR INDICATORS**

Longer-lasting tyres **resistant to wear and kerb damage** – providing better ROI and more sustainability.



## **'INTELLIMAX' GROOVES WITH STIFFENERS**

Reduced tread wear combined with **good traction and stability**.



## **DEEP 'FLEXOMATIC' SIPES**

**Short braking distances** throughout tyre life. High mileage, 3PMSF capability, low rolling resistance.



## **COOL RUNNING/ HIGH ABRASION RESISTANT TREAD COMPOUND**

High **mileage** and **fuel efficiency**.



## **ELECTRIC DRIVE READY**

Enhanced tyre **load capacity**. Improved **fuel efficiency** for maximised range and battery life.



## **RFID CHIP IN TYRE**

Supports state-of-the-art tyre flow management.



# ULTRA GRIP MAX D

**EXCELLENT GRIP IN  
DIFFICULT CONDITIONS**

A specialist drive-axle tyre designed for winter and mountain applications, offering improved traction on ice and snow, along with excellent mileage.



**DRIVE**

## **DIRECTIONAL TREAD DESIGN**

The large V-shaped grooves offer multi-directional edge angles for effective snow grip.



## **INTELLIMAX BLOCK TECHNOLOGY**

featuring longitudinal, diamond shape blocks and contoured sipes for different strength in the block.



## **ANGLED SIPES WITH RAINDROP CHANNELS AT THE BOTTOM**

Raindrop channels open when the tyre is 75% worn offering additional grooves and avoiding stress peaks in the bottom of the sipes.



## **INTERCONNECTING STIFFENER BRIDGES BETWEEN BLOCKS**

Bridges stiffen certain parts of the Intelliblocks leaving other parts more flexible. This flexibility activates the sipe opening to effectively "bite" into the snow.



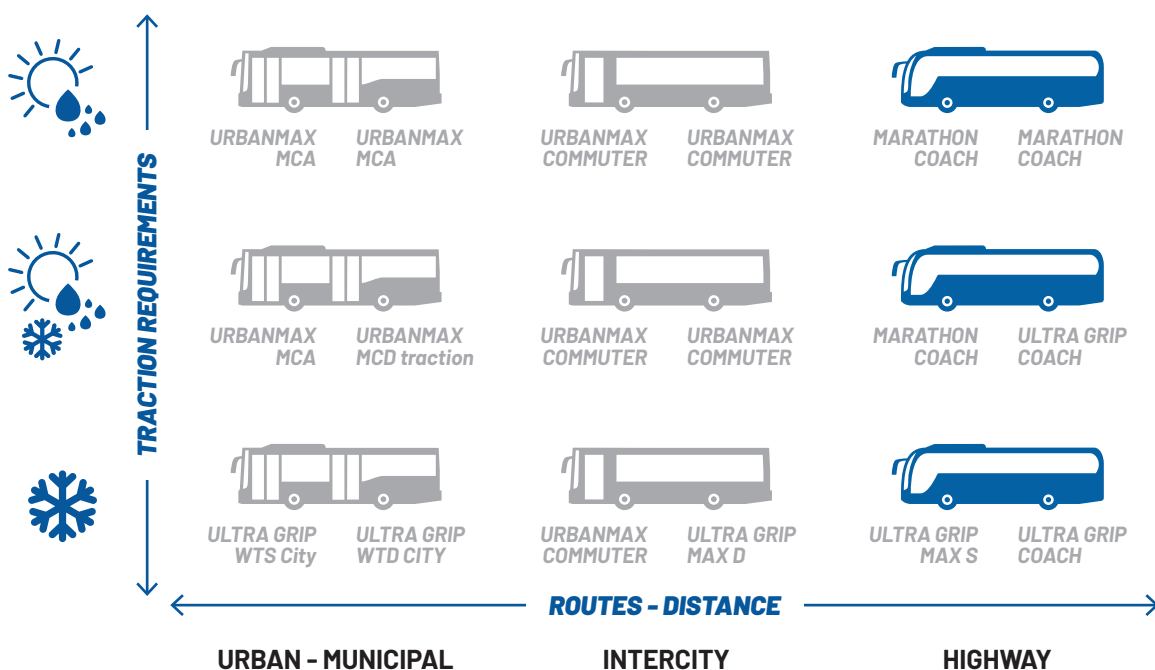
## **CONICAL STONE EJECTORS**

Stones get pushed out when they are trapped, reducing damage.



# TYRES FOR EFFICIENT AND COMFORTABLE LONG DISTANCE TRAVEL

Coach passengers expect a comfortable experience, yet operators also need to bear in mind the need for economy. Delivering great mileage and fuel efficiency together with a quiet, smooth ride, Goodyear brings you both with the **MARATHON COACH** and **ULTRA GRIP COACH**.



## MARATHON/ULTRA GRIP COACH IS THE RIGHT CHOICE FOR BUS FLEETS THAT:

  
OPERATE MAINLY  
IN NON-URBAN  
ENVIRONMENTS

  
WANT TO OFFER  
PASSENGER  
COMFORT

  
EXPECT HIGH  
MILEAGE AND  
EVEN WEAR

  
REQUIRE  
ALL-WEATHER  
CAPABILITY

# MARATHON COACH

**MILE AFTER MILE OF CUSTOMER COMFORT**

An all-position coach tyre, predominantly for inter-regional and long-distance routes, offering excellent mileage. Designed to provide high-mileage value and fuel economy to coach service operators and a low-noise, comfortable ride to passengers. Also provides excellent grip and reduced rolling resistance.

**STEER / ALLROUND**



## **SOLID SHOULDER RIBS**

Resistance to high lateral forces caused by a high centre of gravity and intensive cornering.

## **ASYMMETRIC DESIGN**

Dedicated pattern for coach applications with strong outside shoulder ribs for high resistance to irregular wear.

## **HIGH DENSITY OF EDGE SIPES**

Additional biting edges providing high traction and braking performance throughout the life of the tyre.

## **STONE PENETRATION PROTECTORS**

For better stone penetration resistance and improved self-cleaning.



# ULTRA GRIP COACH

## THE SPECIALLY DEVELOPED ALL-WEATHER AND WINTER COACH TYRE

A specialist coach winter tyre for drive axles, offering excellent grip and traction on snow and ice. ULTRA GRIP Coach tyres are designed to ensure passengers have a comfortable ride while delivering excellent mileage.



**DRIVE**

### HIGH DENSITY OF SIPES AND BITING EDGES

Increases the traction on slippery surfaces for optimal winter performance.



### WIDE CIRCUMFERENTIAL ZIG-ZAG GROOVES

Improved water and slush evacuation for optimal winter traction.



### DIRECTIONAL TREAD PATTERN DESIGN

The V-shaped block configuration offers high traction with limited slip for even wear and increased mileage at reduced noise emissions.



### 3D WAFFLE BLADES AND FLEXOMATIC SIPES

Create a large number of biting edges. The 3D waffle sipes interlock and limit block movement for high mileage and excellent winter traction.



# ULTRA GRIP MAX S

**KEEPS YOU GOING THROUGH WINTER**

**A steer tyre designed to brave the cold. Stay stable through icy corners, maintain grip on snowy roads and stay safe throughout winter.**



**STEER**

## **LARGE, DEEP LONGITUDINAL GROOVES**

Large grooves maintain longitudinal biting edges throughout the tyre's life. Lateral grip gives excellent cornering stability on snow and ice.



## **INTELLIMAX EDGE TECHNOLOGY AND LARGE Z-SHAPED RADIAL GROOVES**

The high number of biting edges result in excellent braking performance on slippery road conditions.



## **LARGE INTERCONNECTED SHOULDER BLOCKS**

High mileage potential thanks to the robust shoulder area.



## **LATERAL SHOULDER NOTCHES**

In extreme winter conditions, the tyres bite into deep snow and provide extra grip.



## **INTELLIMAX BLOCK TECHNOLOGY**

Strong braking performance on winter roads thanks to the large number of biting edges that interlock with every road surface.

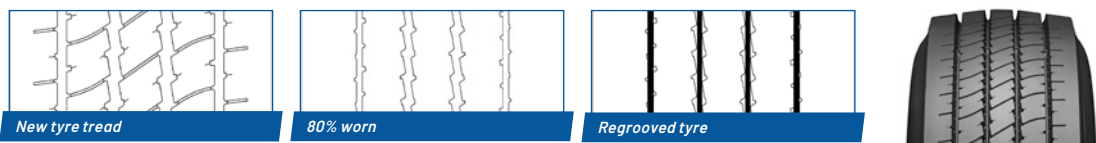


# BUS TYRES TECHNICAL DATA

## REGROOVING RECOMMENDATIONS

Goodyear bus tyres are both retreadable and regroovable and have been developed for optimized sustainability, allowing fleets to make the best use of their tyre assets and substantially reduce their cost per mile and environmental footprint.

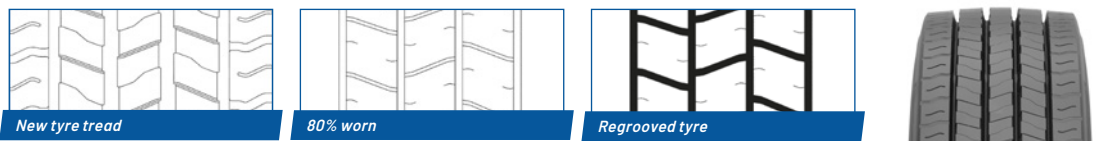
### URBANMAX MCA



Max. regrooving depth 3mm, regrooving width 6-8mm.

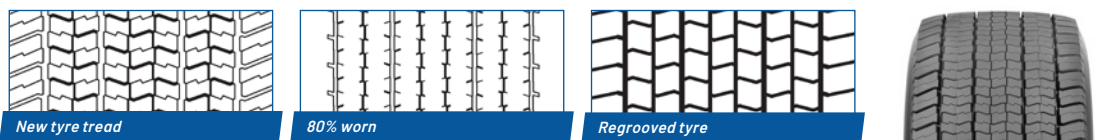
### URBANMAX MCD TRACTION

#### 5-RIB DESIGN (275/70R22.5)



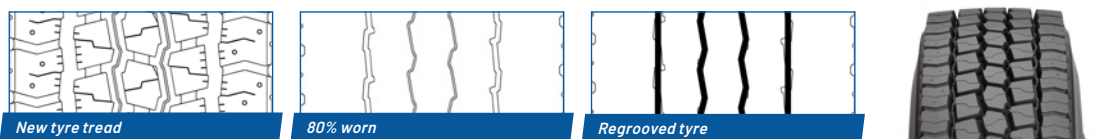
Max. regrooving depth 3mm, regrooving width 6-8mm.

#### 9-RIB DESIGN (455/45R22.5)



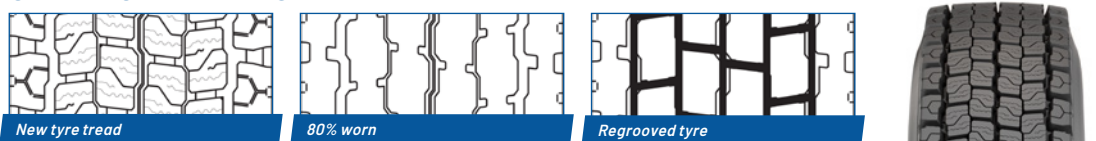
Max. regrooving depth 3mm, regrooving width 6-8mm.

### ULTRA GRIP WTS CITY



Max. regrooving depth 3mm, regrooving width 6-8mm.

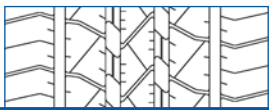
### ULTRA GRIP WTD CITY



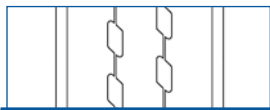
Max. regrooving depth 3mm, regrooving width 6-8mm.



### URBANMAX COMMUTER



New tyre tread



80% worn



Regrooved tyre



Max. regrooving depth 3mm, regrooving width 6-8mm.

### ULTRA GRIP MAX D



New tyre tread



80% worn

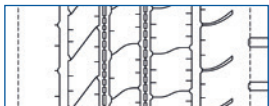


Regrooved tyre

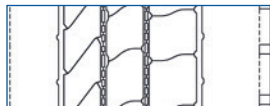


Max. regrooving depth 3mm, regrooving width 6-8mm.

### MARATHON COACH



New tyre tread



80% worn



Regrooved tyre



Max. regrooving depth 3mm, regrooving width 6-8mm.

### ULTRA GRIP COACH



New tyre tread



80% worn



Regrooved tyre



Max. regrooving depth 3mm, regrooving width 6-8mm.

### ULTRA GRIP MAX S



New tyre tread



80% worn



Regrooved tyre



Max. regrooving depth 3mm, regrooving width 6-8mm.



# BUS TYRES TECHNICAL DATA

TYRE DESIGN NAME	SIZE	LOAD / SPEED INDEX 1	LOAD / SPEED INDEX 2	FUEL EFFICIENCY NCY	WET GRIP	NOISE EMISSIONS (CLASS / dB)	SNOW GRIP 3PMFS	RFID
<b>CITY-BUS</b>								
URBANMAX MCA	265/70 R 19.5	140/138 L		D	C	A 70	Δ	
URBANMAX MCA	295/80 R 22.5	152/148 J	154/150 E	D	C	A 71	Δ	
URBANMAX MCA	275/70 R 22.5	148/145 J	152/148 E	E	C	A 71	Δ	
URBANMAX MCA HL	275/70 R 22.5	150/148 J	152/148 E	D	C	A 71	Δ	
URBANMAX MCA HL+	275/70 R 22.5	152/149 J		C	B	A 71	Δ	✓
URBANMAX MCA	315/60 R 22.5	152/148 J		C	C	B 72	Δ	
URBANMAX MCD* TRACTION	275/70 R 22.5	148/145 J		E	C	A 72	Δ	
URBANMAX MCD TRACTION	455/45 R 22.5	166 J		C	B	B 75	Δ	
ULTRA GRIP WTS CITY	275/70 R 22.5	148/145 J	152/148 E	E	C	B 74	Δ	
ULTRA GRIP WTD CITY	275/70 R 22.5	148/145 J	152/148 E	E	C	A 73	Δ	
<b>INTER-CITY</b>								
URBANMAX COMMUTER	295/80 R 22.5	156/149 L		C	B	B 74	Δ	✓
ULTRA GRIP MAX D	295/80 R 22.5	152/148 M		E	C	A 73	Δ	
<b>COACH</b>								
MARATHON COACH HL	295/80 R 22.5	154/149 M		C	B	A 71	Δ	
MARATHON COACH	315/80 R 22.5	156/150 L	154/150 M	B	B	A 71	Δ	
ULTRA GRIP COACH HL	295/80 R 22.5	154/149 M		D	C	A 72	Δ	
ULTRA GRIP COACH	315/80 R 22.5	156/150 L	154/150 M	D	C	A 73	Δ	
ULTRA GRIP MAX S HL	295/80 R 22.5	154/149 L		D	B	B 72	Δ	
ULTRA GRIP MAX S	315/80 R 22.5	156/150 L	154/150 M	C	B	B 72	Δ	

**GOODYEAR**

Goodyear Operations S.A.  
Avenue Gordon Smith  
L-7750 Colmar-Berg  
Luxembourg

**[www.goodyear.eu/truck](http://www.goodyear.eu/truck)**

Subject to modifications and errors. Products  
and data are shown for illustrative purposes only  
Graphic accuracy and logo placement may differ  
from the genuine product.



(0323 / ENG)

**GOODYEAR**