

FIT FOR THE FUTURE



URBANMAX

**ROBUST, EFFICIENT
AND ELECTRIC-READY.**

GOODYEAR

URBANMAX

THE FUTURE-READY BUS TYRE

As the need to reduce emissions in metropolitan areas increases, electric buses are increasingly used alongside existing vehicles, presenting new challenges in tyre selection.

Whether you use electric or conventional buses, the URBANMAX range gives bus fleets everything you need. URBANMAX MCA and MCD tyres are 3PMSF-labelled, provide excellent mileage and are fully regroovable and retreadable. They are also robust enough to withstand the rigours of start-stop urban driving, and have reinforced sidewalls that protect against scuffing and abrasion.

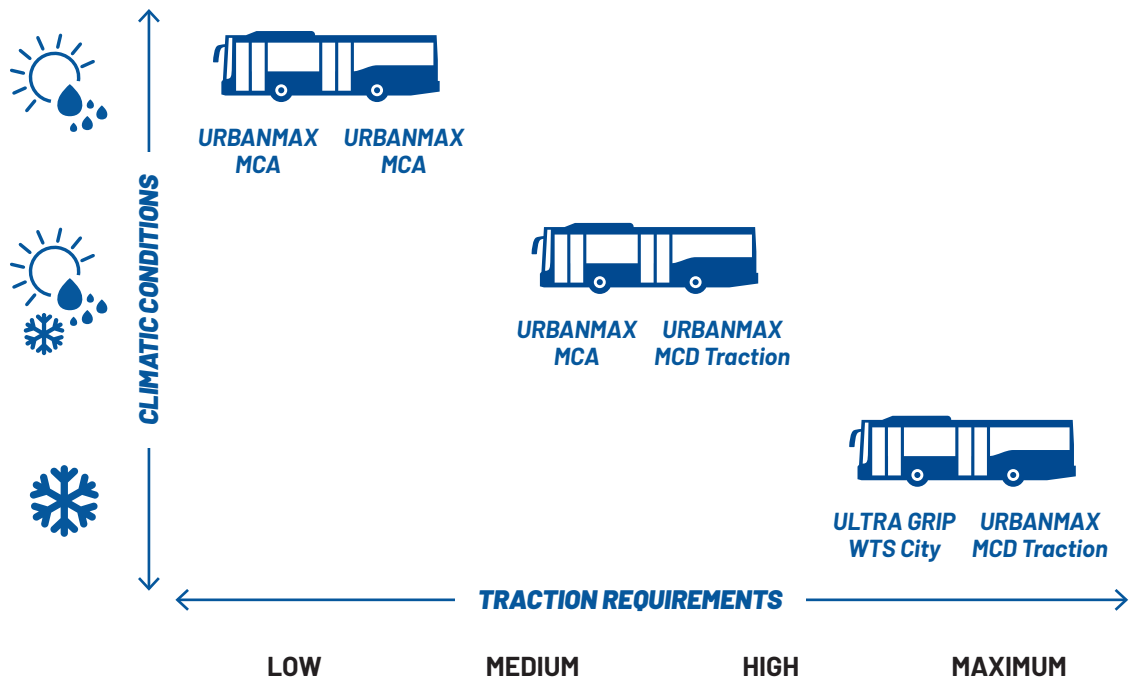
But now the family has embraced the future with the new, electric-drive-ready MCA HL+, which brings added load capacity to the steer axle to carry the extra weight of the battery pack. Not only that, it offers improved Grade C fuel efficiency, giving electric vehicles greater battery life and range, and producing fewer emissions.

Urban bus fleets are having to adapt to meet the demands of modern metropolitan life. **Fortunately, URBANMAX is also adapting to give you efficiency, strength and sustainability now and in the future.**



TYRE COMBINATIONS FOR ALL SEASONS

Using URBANMAX tyres on different axles – or in combination with the Goodyear ULTRA GRIP range – enables bus fleets to cope with all conditions and climates.



URBANMAX TYRES ARE THE IDEAL CHOICE FOR BUS FLEETS THAT:



WANT HIGH MILEAGE
WITH PROTECTION
AGAINST TYRE DAMAGE



NEED TO COPE
WITH ICY/
WET ROADS



SEEK BETTER
FUEL EFFICIENCY/
BATTERY RANGE



ARE STARTING
TO INCORPORATE
ELECTRIC VEHICLES



URBANMAX STREETWISE BY DESIGN

URBANMAX TYRES BENEFIT FROM A NUMBER OF FEATURES THAT MAKE THEM PERFECTLY SUITED FOR CITY STREETS – INCLUDING RECENT INNOVATIONS DESIGNED FOR ELECTRIC VEHICLES.

1. REINFORCED SIDEWALLS

guard against **abrasion and scuffing** caused by kerbside contact. Wear indicators show when tyre should be reversed.

2. FLEXOMATIC SIPES

ensure **effective braking** and performance in **wintry conditions**. All tyres are 3PMSF-labelled.

3. ELECTRIC-READY INNOVATION

Higher load capacity provided by interlaced strip technology to support heavier battery packs – and further improve **fuel/battery economy**. (MCA HL+ only)

4. NEW TREAD COMPOUND

improves fuel efficiency (label grade C) and battery life and also further enhances traction in the wet. (MCA HL+)



URBANMAX RANGE

**STEER &
ALLROUND**



URBANMAX MCA

THE URBANMAX MCA TYRE CAN BE USED ON THE STEERING AXLE OR AS AN ALL-ROUND FITMENT.

BENEFITS

- Excellent mileage potential
- High retreadability
- Reinforced sidewalls
- Good wet grip
- Good all-season traction (3PMSF)
- Reduced noise

**STEER &
ALLROUND**



URBANMAX MCA HL+

THE URBANMAX MCA HL+ TYRE IS AN 'ELECTRIC DRIVE READY' VERSION, PROVIDING HIGH LOAD CAPACITY TO SUPPORT HEAVY BATTERY PACKS ON ELECTRIC BUSES, AND GREATER ECONOMY FOR EXTENDED BATTERY LIFE.

BENEFITS

- Higher load capacity
- Lower rolling resistance for better battery life/ fuel consumption
- Efficiency label improved by 2 grades compared to standard URBANMAX MCA
- Reinforced sidewalls
- Excellent wet grip
- Good all-season traction (3PMSF)
- RFID tag in tyre for advanced tyre management



URBANMAX RANGE

DRIVE



URBANMAX MCD TRACTION

THE URBANMAX MCD / MCD * TRACTION TYRE IS
DESIGNED FOR THE DRIVE AXLE OF CITY BUSES IN
CHALLENGING WEATHER CONDITIONS.

BENEFITS

- Excellent mileage potential
- High retreadability
- Reinforced sidewalls
- Good wet grip
- Excellent all-season traction (3PMSF)
- Reduced noise

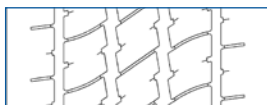
URBANMAX

TECHNICAL DATA

REGROOVING RECOMMENDATIONS

URBANMAX tyres are both retreadable and regroovable and have been developed for optimised sustainability, allowing fleets to make the best use of their tyre assets and substantially reduce their cost per mile and environmental footprint.

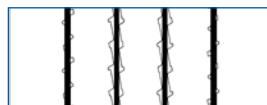
URBANMAX MCA



New tyre tread



80% worn



Regrooved tyre



Max. regrooving depth 3mm, regrooving width 6-8mm.

URBANMAX MCD TRACTION 5-RIB DESIGN (275/70R22.5)



New tyre tread



80% worn



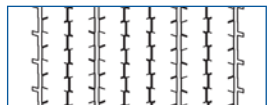
Regrooved tyre



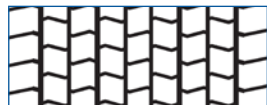
9-RIB DESIGN (455/45R22.5)



New tyre tread



80% worn



Regrooved tyre



Max. regrooving depth 3mm, regrooving width 6-8mm.

TYRE DESIGN NAME	SIZE *	LOAD / SPEED INDEX 1	LOAD / SPEED INDEX 2	FUEL EFFICIENCY	WET GRIP	NOISE EMISSIONS (CLASS / dB)		SNOW GRIP 3PMSF	RFID
UrbanMax MCA	265/70 R 19.5	140/138 L		D	C	A	70	✓	
UrbanMax MCA	295/80 R 22.5	152/148 J	154/150 E	D	C	A	71	✓	
UrbanMax MCA	275/70 R 22.5	148/145 J	152/148 E	E	C	A	71	✓	
UrbanMax MCA HL	275/70 R 22.5	150/148 J	152/148 E	D	C	A	71	✓	
UrbanMax MCA HL+	275/70 R 22.5	152/149 J		C	B	A	71	✓	✓
UrbanMax MCA	315/60 R 22.5	152/148 J		C	C	B	72	✓	
UrbanMax MCD* Traction	275/70 R 22.5	148/145 J	152/148 E	E	C	A	72	✓	
UrbanMax MCD Traction	455/45 R 22.5	166 J		C	B	B	75	✓	



Goodyear Operations S.A.
Avenue Gordon Smith
L-7750 Colmar-Berg
Luxembourg

www.goodyear.eu/truck

Subject to modifications and errors.
All illustrations and data are exemplary.
Graphic accuracy and logo placement may differ
from the genuine product.

(1121/ENG)

