

EFFICIENT VERSATILITY



**FUELMAX
GEN-2**

**FUEL-EFFICIENT TYRES
TO SUIT ALL NEEDS**

GOODYEAR



FUELMAX GEN-2

A WIDE RANGE OF FUEL-EFFICIENT TYRES TO CUT EMISSIONS ACROSS ALL VEHICLE TYPES



Europe's commercial transport fleets are constantly working to reduce their carbon emissions, and therefore need to equip vehicles of all kinds with tyres that reduce CO₂ emissions.

The **FUELMAX GEN-2** range covers all needs. Available in a **range of sizes**, it provides high fuel efficiency combined with **enhanced mileage, traction and reduced noise emissions**. It is the ideal choice for fleets looking for a balanced long-haul tyre. In addition, it offers **3PMSF** marking on all **steer and drive** axle tyres to cope with the **most restrictive winter legislation**.

With **FUELMAX GEN-2**, your fuel efficiency needs are covered.

Fuel-saving tread compounds

Reduce CO₂ emissions and lower fuel costs

Extendable tyre life

High-quality casings for high retreadability

All-weather capabilities

3PMSF rating on all steer and drive tyres

High levels of traction

Throughout tyre life



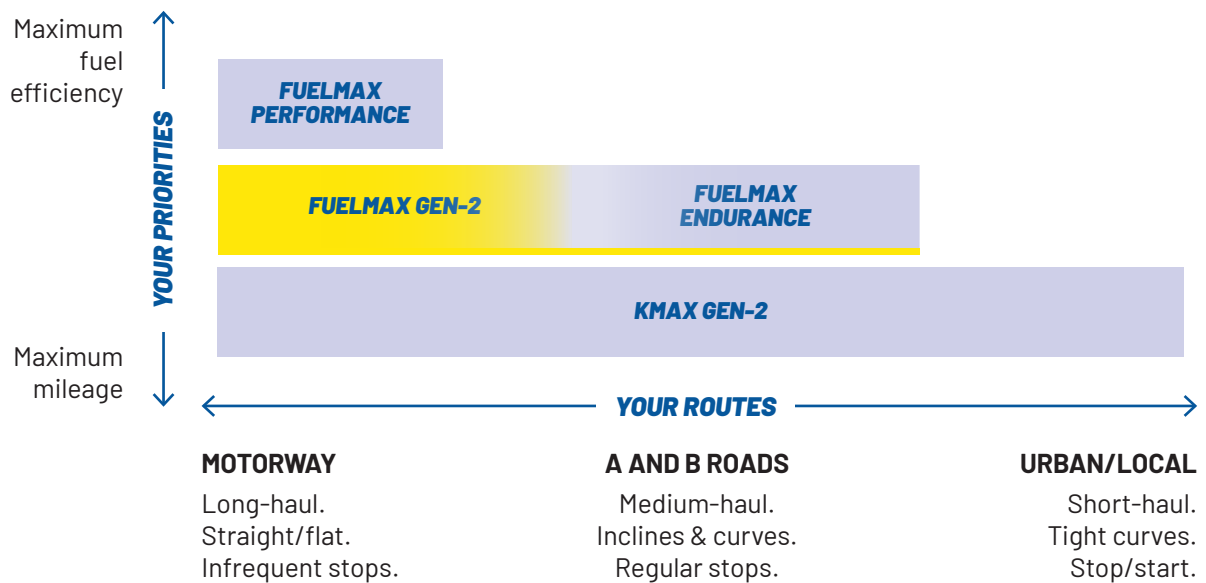
RADIO FREQUENCY IDENTIFICATION (RFID)

RRFID tags are integrated in all FUELMAX S and D GEN-2 tyres.

An RFID tag is embedded inside the tyre and allows simple identification and connectivity to tyre management and tracking systems. The RFID contains ISO standard information as per SGTIN96 coding. Tyres can communicate with a cloud network on an individual serial number level, optimising tyre flow management.

WHICH TYRES ARE RIGHT FOR YOU?

Fleet managers choose tyres depending on the routes they drive and their priorities in terms of mileage or fuel economy and CO₂ emissions. The FUELMAX GEN-2 range includes tyres for all kinds of vehicles and are mainly for fleet managers who want to reduce emissions and improve fuel efficiency on long-haul routes.



FUELMAX ENDURANCE IS THE IDEAL CHOICE OF TYRE FOR FLEETS THAT:



AIM TO REDUCE EMISSIONS



WANT TO IMPROVE FUEL EFFICIENCY



RUN ROUTES MAINLY ON LONG HAUL, MOTORWAY AND A ROADS



FUELMAX GEN-2

FUEL-EFFICIENT TYRES TO SUIT ALL NEEDS

FUELMAX S GEN-2

FUEL SAVING TYRE WITH LOW ROLLING RESISTANCE
AND HIGH MILEAGE POTENTIAL

The FUELMAX S GEN-2 range provides excellent fuel efficiency as well as allowing fleets to face the multiple challenges they might find on their daily route. It features IntelliMax Rib Technology that offers high mileage and precise steering with deep Flexomatic sipes for wet and winter braking. FUELMAX GEN-2 tyres are marked with the Three Peak Mountain Snowflake to fulfil the most stringent winter regulations.

STEER



5-RIB

6-RIB

1. INTELLIMAX RIB TECHNOLOGY

Stiffener bridges connect when the tyre rolls, making the tread stiffer and **limiting slip**, which **increases mileage** and enhances **steering precision**.

2. DEEP "FLEXOMATIC" SIPES

"Flexomatic" sipes close when rolling through the footprint, allowing the tread blocks to interlock and making the tread stiffer. This **reduces braking distances** and **enhances fuel efficiency and mileage**.

3. EVEN FOOTPRINT PRESSURE DISTRIBUTION

Shows exceptionally regular footprint pressure distribution in a wide range of load conditions. This contributes to **regular tread wear** and **high mileage in long-haul applications**.



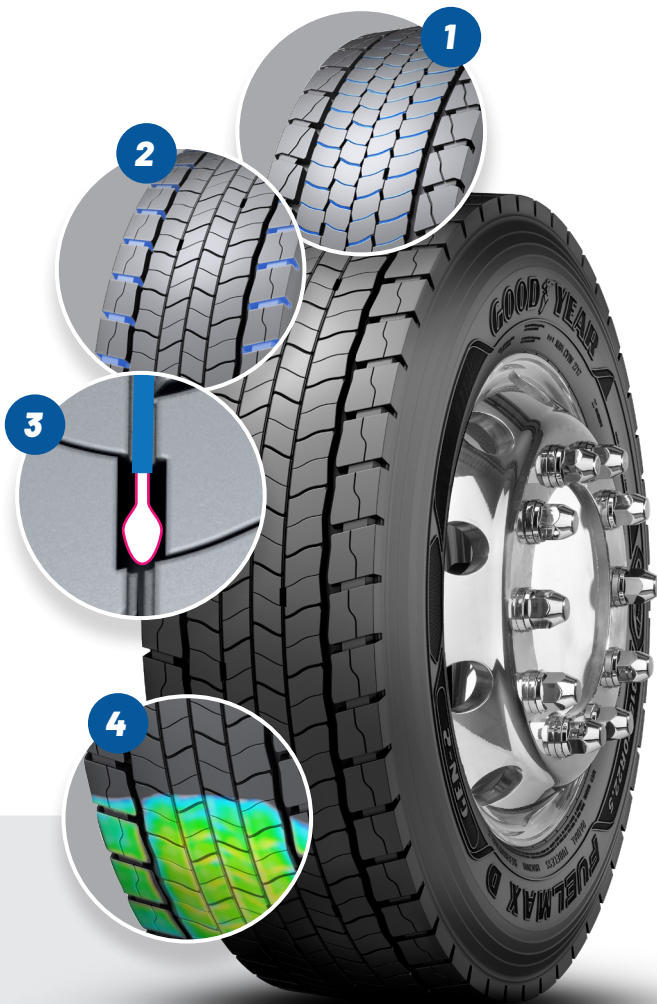
DRIVE

FUELMAX D GEN-2

**HIGH FUEL EFFICIENCY COMBINED WITH ENHANCED MILEAGE,
TRACTION AND REDUCED NOISE EMISSIONS**



The FUELMAX D GEN-2 drive axle tyre offers excellent fuel saving potential through optimised rolling resistance in a well balanced package for inter-regional and long-haul applications. It features excellent traction with improved all-weather capabilities throughout the tyre life and fulfils all European winter regulations.



1. HIGH-DENSITY, FULL-DEPTH TREAD SIPING

Sipes go down to 100% of tread depth for increased biting edges length throughout the tyre life. This provides **life-long traction** in **all road surface conditions**, good **wet braking performance**, and contributes to **3PMSF rating**.

2. LARGE SHOULDER GROOVES

Openings in the shoulder ribs create biting edges for **increased traction** and **effectively evacuate water** and mud. This delivers **high traction** throughout tyre life.

3. INTELLIMAX GROOVE TECHNOLOGY

Hidden **raindrop shaped centre grooves**: Narrow centre grooves close as they roll through the footprint, stiffening the tread at full depth. When the tyre is half-worn, the hidden raindrop shaped grooves underneath open up and create new structures for **additional grip and water drainage** in the tyre's late life.

4. REGULAR FOOTPRINT PRESSURE DISTRIBUTION

The design and casing shape avoids irregular wear, thus enhancing **high mileage potential**.



TRAILER



FUELMAX T

TRAILER TYRE OPTIMISED FOR FUEL EFFICIENCY AND LOW EMISSIONS IN ON-ROAD APPLICATIONS.



The FUELMAX T features a multi-radius cavity and a special tread compound offering ultra-low rolling resistance for excellent fuel saving, combined with improved mileage performance, good braking in wet conditions and low noise emissions. The new bead geometry in combination with modern high tensile cord material creates a highly robust casing structure for improved retreadability and extended tyre life.

1. SPECIFIC SILICA-RICH TREAD COMPOUND

Provides a combination of **good wet grip**, **low rolling resistance** and **high mileage potential**.

2. COMPLEX MULTI-RADIUS CAVITY

Optimises pressure distribution in the footprint, which means **high wearable tread volume**, **low rolling resistance** and **fuel efficiency**.

3. WIDE AND SOLID SHOULDER RIBS

Highly resistant against shoulder wear, which **reduces irregular wear** in pure long-haul use. Helps to **extend tyre life** and **improve stability and handling**.



'FRT' stands for 'Free Rolling Tyre' and is a legal marking according to the UNECE Regulation No.54, which indicates that the tyre is specifically designed and intended for the equipment of trailer axles and axles of motor vehicles other than front steering and all drive axles. Therefore, these trailers tyres marked 'FRT' should be used exclusively on trailer axles and axles of motor vehicles other than front steering and all drive axles and should not be fitted in any other position. Goodyear Dunlop will not warrant and cannot be held accountable for any potential liability claim involving FRT tyres fitted outside these recommendations.

FRT

M+S

FUELMAX GEN-2

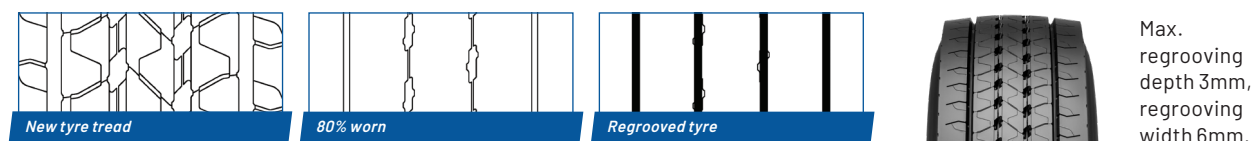
TECHNICAL DATA

REGROOVING RECOMMENDATIONS

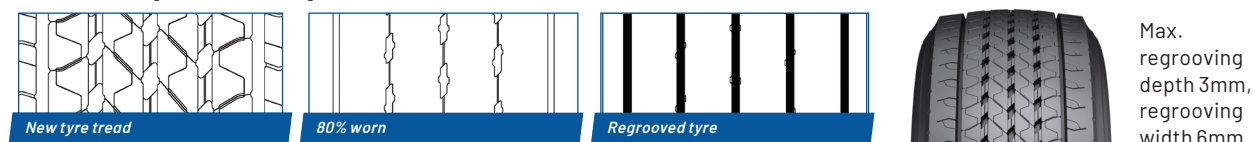
FUELMAX GEN-2 tyres are both retreadable and regroovable and have been developed for optimised sustainability, allowing fleets to make the best use of their tyre assets and substantially reduce their cost per mile and environmental footprint.

FUELMAX S GEN-2

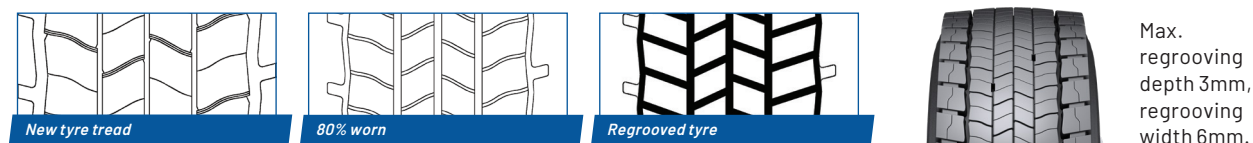
5-RIB DESIGN (315/70R22.5)



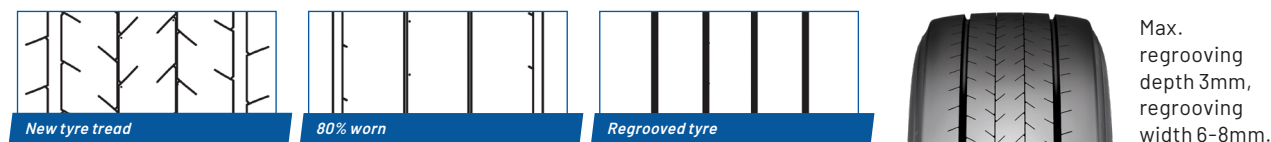
6-RIB DESIGN (385/55 R 22.5)



FUELMAX D GEN-2



FUELMAX T



TYRE DESIGN NAME	SIZE	LOAD / SPEED INDEX 1	LOAD / SPEED INDEX 2	FUEL EFFICIENCY	WET GRIP	NOISE EMISSIONS (CLASS / dB)	SNOW GRIP 3PMSF	M+S	RFID
FUELMAX S GEN-2 HL	295/80 R 22.5	154/149 M		B	C	A 70	✓	✓	✓
FUELMAX D GEN-2	295/80 R 22.5	152/148 M		C	B	A 73	✓	✓	✓
FUELMAX S GEN-2	315/80 R 22.5	156/150 L	154/150 M	B	B	A 71	✓	✓	✓
FUELMAX D GEN-2	315/80 R 22.5	156/150 L	154/150 M	B	C	A 73	✓	✓	✓
FUELMAX S GEN-2 HL	315/70 R 22.5	156/150 L		B	B	A 70	✓	✓	✓
FUELMAX D GEN-2	315/70 R 22.5	154/150 L	152/148 M	B	B	A 73	✓	✓	✓
FUELMAX S GEN-2	385/65 R 22.5	160 K	158 L	B	B	A 70	✓	✓	✓
FUELMAX S GEN-2	295/60 R 22.5	150/147 K	149/146 L	B	C	A 71	✓	✓	✓
FUELMAX D GEN-2	315/60 R 22.5	152/148 L		B	C	A 73	✓	✓	✓
FUELMAX D GEN-2	295/55 R 22.5	147/145 K		B	B	B 74	✓	✓	✓
FUELMAX S GEN-2	385/55 R 22.5	160 K	158 L	B	B	A 71	✓	✓	✓
FUELMAX T	435/50 R 19.5	160 J		A	C	B 73		✓	
FUELMAX T HL	435/50 R 19.5	164 J		A	C	A 70		✓	
FUELMAX T HI	385/65 R 22.5	164 K	158 L	A	C	A 70		✓	
FUELMAX t	385/55 R 22.5	160 K	158 L	A	C	A 70		✓	



Goodyear Operations S.A.
Avenue Gordon Smith
L-7750 Colmar-Berg
Luxembourg



www.goodyear.eu/truck

Subject to modifications and errors.
Products and data are shown for illustrative
purposes only. Graphic accuracy and logo
placement may differ from the genuine product.

(0222/ENG)

GOODYEAR